



**Large-Module CNC Gear Hobbing Machine  
Model : YKD30100**

## Features

The model YKD30100 large-module CNC gear hobbing machine is capable of cutting large-module workpiece, even up to 20mm module. It is a 2 axes CNC machine: X axis (Radial feed motion) and Z axis (Axial feed motion), which are all driven by AC servo-motors. The CNC system adopt German SIEMENS-802D. On the principle of continuous indexing, the machine is capable of cutting cylindrical spur and helical gear, crowning and slightly tapered teeth, as well as wormwheels by radial cutting method. Axial and radial feed axes are driven by AC servo-motors through preloaded ball screws. The machine is best suited for mine, oil ship, engineering mechanism industries in hobbing large gears.

## Following Components for Special Order

Item	Name & Spec	Number	Instruction
Column and Tailstock adding height 270	Hob head travel 800	1	Gear with large face width
Column and Tailstock adding height 270	Hob head travel 1210	1	Gear with large face width
Tailstock bottom blocked up	300, 350, 400	1	Longer shaft gear
Tailstick adding height distance between tailstock hole end face and worktable surface	600 - 1700	1	Longer shaft gear
	915 - 1460	1	Longer shaft gear
	575 - 1300	1	Longer shaft gear
Tailstock top		1	Shaft gear
Tailstock hold hoop	hoop dia 180 - 270	1	Long shaft gear
Tailstock hold hoop and top	old hoop dia 180 - 270	1	Shaft and Long shaft gear
Add worktable bore (bore dia. x depth)	260 x 300, 180 x 150	1	Larger shaft gear
Tool alignment device	M8 - M16	1	Convenient to make tool alignment
Magnetic chip conveyer	QPGC420	1	Convenient to remove chip

## Specifications

Description	Unit	YKD30100
Max. workpiece dia. with work stay	mm	1000
Max. module	mm	20
Min. tooth number		12
Max. worktable speed	rpm	5
Hole dia. of the worktable	mm	950x200
Hob speed /steps	rpm	24 - 187/7
Distance between hob axis and worktable surface	mm	200 - 730
Min center distance between hob axis and worktable	mm	100 - 740
Distance between tailstock end face and worktable surface	mm	580 - 1000
Max. hob diameter and length	mm	260 x 220
Max. hob head swiveling angle	deg	+ 60
X Z axial motor	N.m	27
Total power	kW	32.75
Main motor power	kW	15
T-slot of worktable: {amount x size}		6 x M20
Overall dimensions LxWxH	cm	443x204x260
Case dimensions LxWxH	cm	440x229x309
Net/Gross weight	Kg	15400/16600

### Standard Accessories:

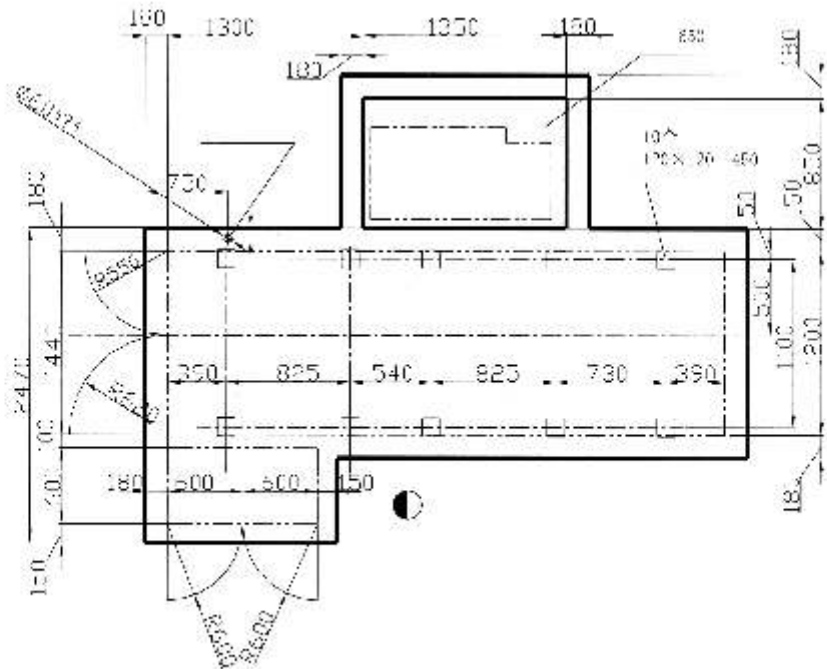
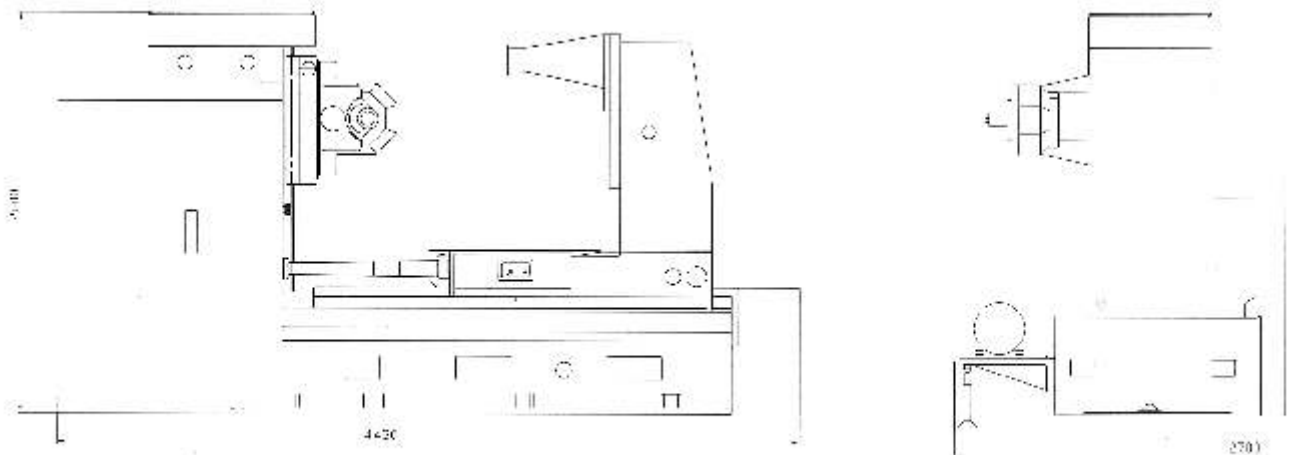
Hob Arbor Assemblies dia 30, 40, 50 one for each.

A complete set of change gears

A complete set of operation tools

### Optional Accessories:

Other dia hob arbor dia 22, 27, 60



**SHIV MACHINE TOOLS**  
A unit of SHIMATO GROUP

Website : [www.shimato.in](http://www.shimato.in)  
Sales : [info@shimato.in](mailto:info@shimato.in)  
Service : [service@shimato.in](mailto:service@shimato.in)



Chennai H.O.:  
#102, Armenian Street, Chennai-1  
Tel: 044 - 2522 7305 / 3473  
044 - 4592 9900 (50 Lines)  
Fax: 044 - 25227954  
Mob: (0)98401 50000 / (0)93802 42142

Chennai - Ambattur:  
371, SIDCO Industrial Estate,  
North Phase Ambattur,  
Chennai - 600098  
Tel: 044 - 4598 6600 (50 Lines)  
Fax: 044 - 4598 6601

Pune:  
Heera Plaza, J-42-43,  
Indrayani Nagar Road,  
Bhosari, Pune - 26  
Tel: 020 - 2711 9700  
Mob: (0)99225 33888

Mumbai:  
#241, Princess Street,  
Chandramahal 1st Floor,  
Mumbai - 400 002.  
Tel: 022 - 3297 4941  
Mob: (0)98673 59270

