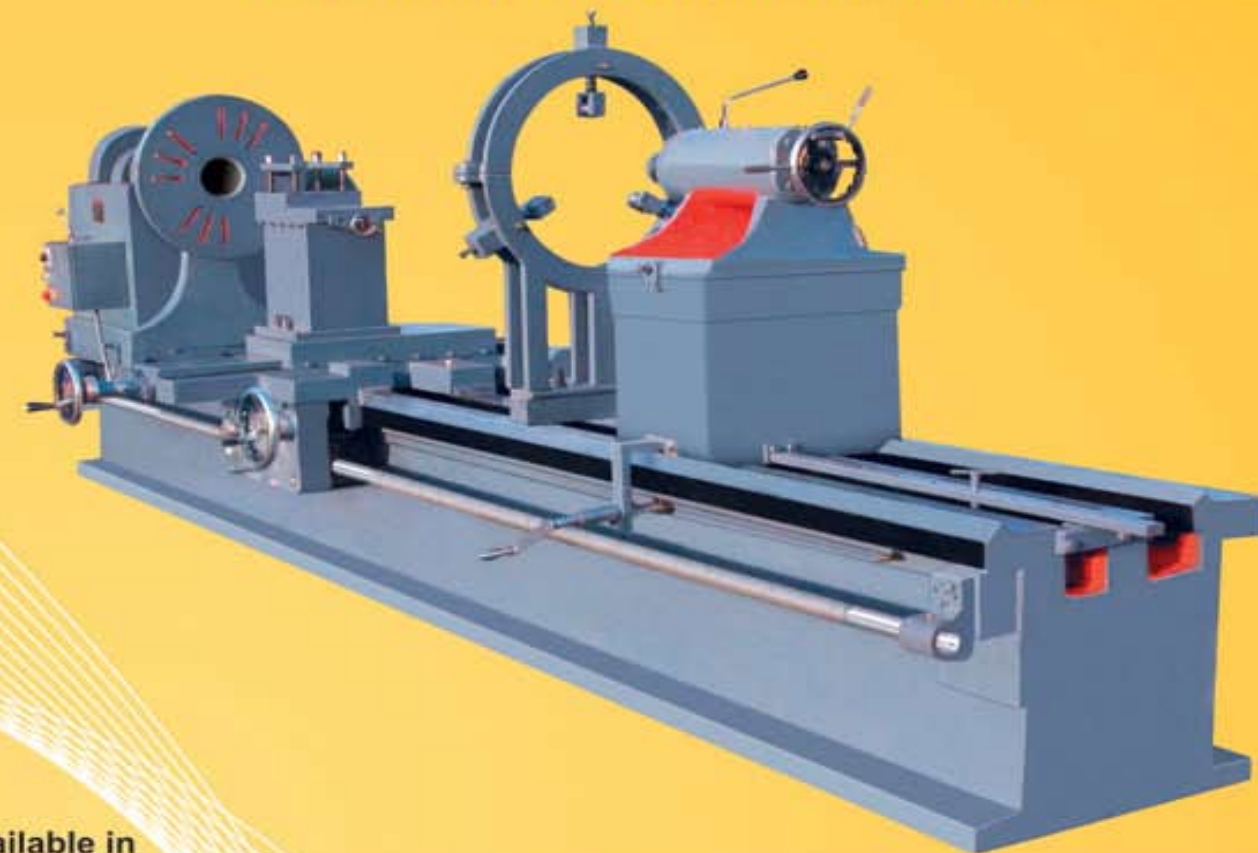


# LEEDS HEAVY DUTY LATHE MACHINE

# LEEDS EXTRA HEAVY DUTY LATHE MACHINE

## SPECIAL FEATURES

- The Bed is made from 25 Grade cast iron of 180 BHN Hardness & seasoned after rough machining to avoid stresses.
- Head stock is cone pulley type, fitted with induction harden and ground spindle, made from alloy steel and running in a wide design pair of bronze metal bearings.
- Apron is totally inclosed oil bath system with level type arrangement for automatic feeds.
- Hexygonal shaped tail stick with hardned and ground tail stock spindle made from alloy steel naving external and internal grinding.
- Test Report as per Indian Standard IS- 1878 (Part- 1) 1971.



SPECIFICATION	HD - 1	HD - 2	HD - 3	HD - 4	HD - 5
<b>CAPACITY</b>					
Height of Centre	254 (10")	254 (10")	254 (10")	254 (10")	254 (10")
Swing Over Bed	480 mm	480 mm	480 mm	480 mm	480 mm
Swing Over Cross Slide	290 mm	290 mm	290 mm	290 mm	290 mm
Swing Gap	800 mm	800 mm	800 mm	800 mm	800 mm
Admit Between Centre	535 (1'9")	990 (3'3")	1600 (5'3")	1905 (6'3")	2515 (8'3")
Movement of Cross slide	240 mm	240 mm	240 mm	240 mm	240 mm
Movement of Compound Slide	140 mm	140 mm	140 mm	140 mm	140 mm
<b>BED</b>					
Bed Type	2 V & 2 Flat	2 V & 2 Flat	2 V & 2 Flat	2 V & 2 Flat	2 V & 2 Flat
Bed Length	1675 (5' 6")	1675 (5' 6")	1675 (5' 6")	1675 (5' 6")	1675 (5' 6")
Bed Width	323 (12 3/4")	323 (12 3/4")	323 (12 3/4")	323 (12 3/4")	323 (12 3/4")
Gap Length	150 mm	150 mm	150 mm	150 mm	150 mm
Gap Length in front of face plate	150 mm	150 mm	150 mm	150 mm	150 mm
<b>MAIN SPINDLE</b>					
Spindle Nose	74.3 thread type	74.3 thread type	74.3 thread type	74.3 thread type	74.3 thread type
Taper Bore in Spindle Sleeve	MT- 4	MT- 4	MT- 4	MT- 4	MT- 4
Spindle Bore	54(2 1/8")	54(2 1/8")	54(2 1/8")	54(2 1/8")	54(2 1/8")
<b>TAIL STOCK</b>					
Quill Dia.	60 mm	60 mm	60 mm	60 mm	60 mm
Taper in Quill	MT- 4	MT- 4	MT- 4	MT- 4	MT- 4
Quill Movement	190 mm	190 mm	190 mm	190 mm	190 mm
<b>THREADS</b>					
Metric Thread	13 (1 to 6 mm)	13 (1 to 6 mm)	13 (1 to 6 mm)	13 (1 to 6 mm)	13 (1 to 6 mm)
English Thread	19 (2 to 24 TPI)	19 (2 to 24 TPI)	19 (2 to 24 TPI)	19 (2 to 24 TPI)	19 (2 to 24 TPI)
Lead Screw	1.5" x 4 TPI	1.5" x 4 TPI	1.5" x 4 TPI	1.5" x 4 TPI	1.5" x 4 TPI
<b>Speed</b>					
No. Of Spindle Speed	8	8	8	8	8
RPM (Low / High)	30 - 475	30 - 475	30 - 475	30 - 475	30 - 475
<b>ELECTRICALS</b>					
Motor Power	1.5 H.P / 1.12 KW	1.5 H.P / 1.12 KW	1.5 H.P / 1.12 KW	2 H.P / 1.5 KW	
<b>DRIVE</b>					
V Belt	C-72	C-72	C-72	C-72	C-72
Flat Belt	50 x 1980 mm	50 x 1980 mm	50 x 1980 mm	50 x 1980 mm	50 x 1980 mm
<b>GENERAL</b>					
Weight (Approx)	1350 kg.	1500 kg.	1800 kg.	1950 kg.	2250 kg.
Floor Space (Approx) L x W x H	1980 x 1065 x 1370 mm.	2440 x 1065 x 1370 mm.	3050 x 1065 x 1370 mm.	3350 x 1065 x 1370 mm.	3960 x 1065 x 1370 mm.

## Available in

Bed Length	7	9	10	12	14	16	18	20	22	24
ABC (mm)	600	1300	1600	2200	2800	3400	4000	4600	5200	5800

SPECIFICATION	Extra Heavy Duty Lathe	Super Extra Heavy Duty Lathe
Height of Centre	15" (Optional upto 36")	254 (10")
Width of bed	18" (Optional 20")	480 mm
Spindle Hole	3 1/8" (Optional 4 1/8", 5 1/8", 6 1/8") (Brass or Bearing type)	4 1/8" (Optional 5 1/8", 6 1/8", 7 1/8") (Brass or Bearing type)
Tail stock OD	75 mm	90 mm
Lead screw OD	1.75"	2"

## STANDARD ACCESSORIES

- Change Gear Set (Inch & mm)
- Steady Rest
- Follow Rest
- Face Plate
- Chuck Plate
- Tool Post Key
- Centre Adaptor
- Dead Centre (2 Nos.)
- Motor Pulley

## EXTRA ACCESSORIES

- Dog or True Chuck
- Electric Motor & V-Belt with Electricals
- Coolant Pump, Tank & Nozzle
- Lubeways coating guideways
- Taper Turning Attachment
- Full Norton Gear Box
- Heavy Duty full Norton Gear Box

Above mentioned information's are subject to change because of product improvement all the parts shown in photo are not included in Standard Accessories.

## STANDARD ACCESSORIES

- Change Gear Set (Inch & mm)
- Steady Rest
- Follow Rest
- Face Plate
- Chuck Plate
- Tool Post Key
- Centre Adaptor
- Dead Centre (2 Nos.)
- Motor Pulley
- Four Position Tool Post

## EXTRA ACCESSORIES

- Dog or True Chuck
- Electric Motor & V-Belt with Electricals
- Coolant Pump, Tank & Nozzle
- Quick Change Tools Post/Rear Tool Post
- Taper Turning Attachment
- Reverse-forward Switch

Above mentioned information's are subject to change because of product improvement all the parts shown in photo are not included in Standard Accessories.



Sold & Serviced in India by:

**Shiv Machine Tools**

New # 102, Armenian Street,  
Chennai - 600 001, India.

Tel : 044 - 2522 3473 / 2522 7305

Fax : + 91 - 44 - 2522 7954

Email : info@shimato.in

Web : www.shimato.in